

AMCI *ADVANCED
MICRO CONTROLS INC.*



INTEGRATED MOTOR PACKAGES

3-IN-1

MOTOR + DRIVE + CONTROLLERS

AMCI.COM

AMCI



Resources

AMCI provides a myriad of resources on their website to provide the best PLC integration possible. Available resources include configuration files, sample programs, 2D & 3D drawings, User-Defined Function Blocks (UDFB's), Add-On Instructions (AOI's), informative webinars & tutorials, and much more.

Resources Include

- Configuration Files (EDS, GSDML, ESI)
- Sample Programs
- 2D & 3D Drawings
- Webinars & Tutorials
- and much more...

PLC-BASED BY DESIGN

AMCI products are uniquely designed to provide the best PLC integration available. Unlike other products that require a separate software package for configuration or operation, AMCI's PLC-based products are programmed using your PLC's software - nothing new to buy or learn! Our expertise with the leading PLC manufacturers is unmatched when it comes to high performance Motion Control technology.

Network Features

Dual-Port Networking - An embedded network switch simplifies product daisy chaining, adds flexibility to any network architecture, and supports redundant protocols like DLR (device level ring) and MRP (media redundancy protocol).

Web Server - A quick and simple screen allows you to select your network type and configure your IP address.

Native Software - Programming is performed by the same software used by your host PLC/PAC, eliminating the need to learn new software and/or language foreign to your controls environment. The results are seamless integration, intuitive troubleshooting, and valuable time savings.

- Use your PLCs native software
- No new software to buy or learn
- Tightest integration available



EtherNet/IP

Modbus

PROFI
NET

EtherCAT

FEATURES

All of AMCI's integrated motor packages offer the following options:

Encoder: Incremental* or Absolute Multi-turn

Connector: M12

Protection: IP50, IP64, or IP67*

*only available with integrated stepper (not servo)

Integrated motors

provide a single compact unit for measurable space savings that can reduce the size of your machine footprint.

APPLICATION EXAMPLES



Rapid Changeover

The low cost of integrated motors provides a path for automating manual operations without the high cost of other motion solutions.



Vision Systems

The SMD Series' microstepping delivers precise positioning and full torque at rest. This eliminates the dither present in other motion solutions for crisp, repeatable imaging.



Packaging

Integrated motors are a great choice for the simple, repetitive motion profiles of packaging applications. Plus, benefit from plug and play PLC integration that cannot be matched.



Medical Equipment

Integrated motors supply loads of power for tight spaces. The compact design eliminates the separate drive and controller reducing cabinet space.

Industries

Integrated motors benefit many different industries including:

- Medical
- Pharmaceutical
- Life Sciences
- Lab Automation
- Imaging
- Printing
- Packaging
- Material handling
- Labeling

Benefits

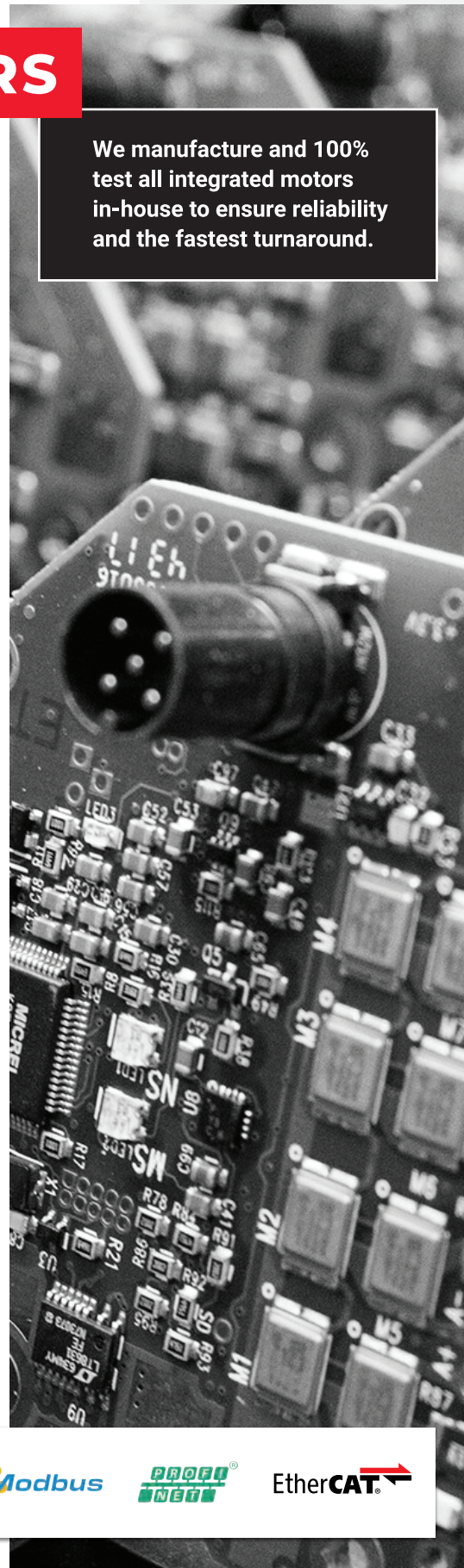
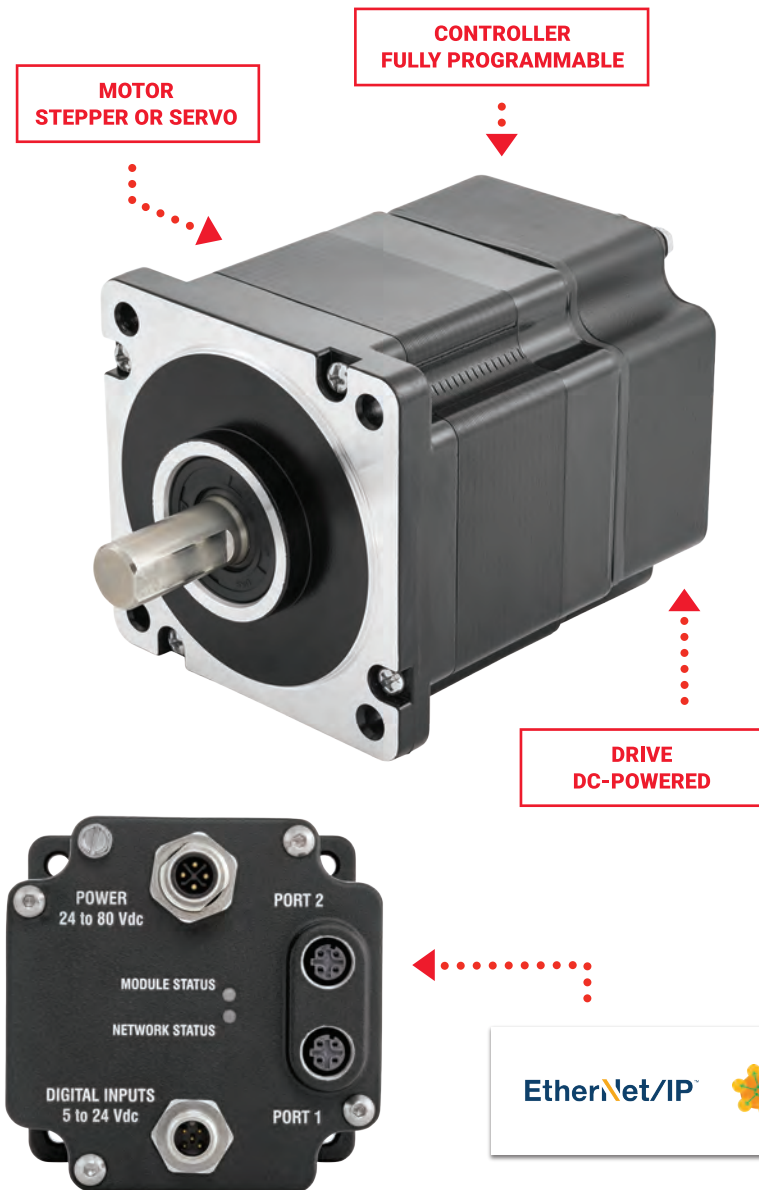
- full torque at rest
- smooth motion
- cost effective
- real time control
- excellent repeatability
- low maintenance

INTEGRATED MOTORS

AT-A-GLANCE

Advances in motor and drive technology have enabled smarter, more affordable PLC-based automation. AMCI's integrated stepper and servo motor packages provide a motion control solution that is designed to streamline the proposal, installation, and commissioning of your motion axis. For over 10 years, AMCI has been engineering integrated motion technologies that fill a gap in the market like no other product.

We manufacture and 100% test all integrated motors in-house to ensure reliability and the fastest turnaround.



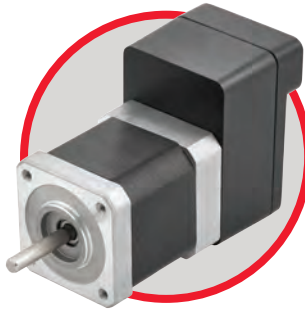
EtherNet/IP™

Modbus

PROFINET

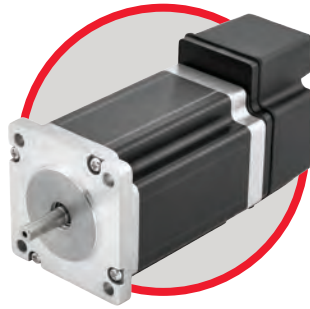
EtherCAT®

SMD17X



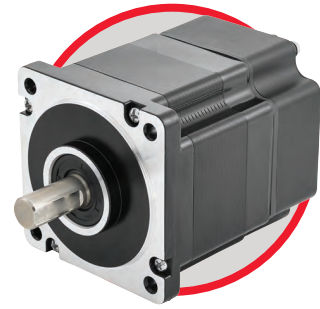
Input Voltage: 24 to 48 Vdc
Motor Current: 2.0 Amp/phase
Package Size: NEMA 17
Holding Torque: 80 oz-in torque
Encoder: Incremental or Absolute
 CIP Sync and UL Listed

SMD23X & SMD24X



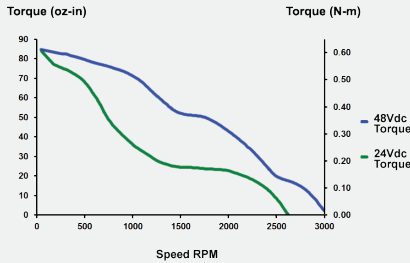
Input Voltage: 24 to 48 Vdc
Motor Current: 3.4 Amp/phase
Package Size: NEMA 23 or 24
Holding Torque: 130 oz-in to 350 oz-in
Encoder: Incremental or Absolute
 CIP Sync

SMD34X

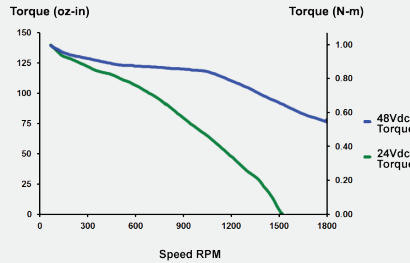


Input Voltage: 24 to 80 Vdc
Motor Current: 5.4 Amp/phase
Package Size: NEMA 34
Holding Torque: 450 oz-in to 1100 oz-in
Encoder: Incremental or Absolute
 CIP Sync

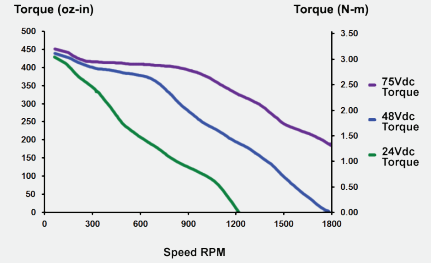
SMD17X-80



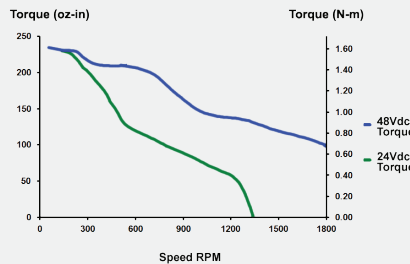
SMD23X-130



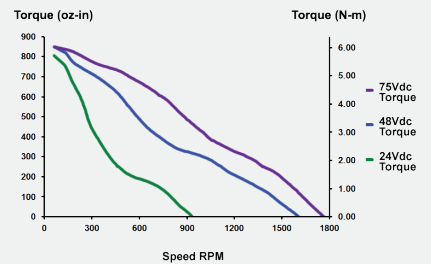
SMD34X-450



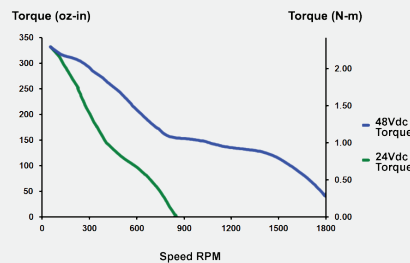
SMD23X-240



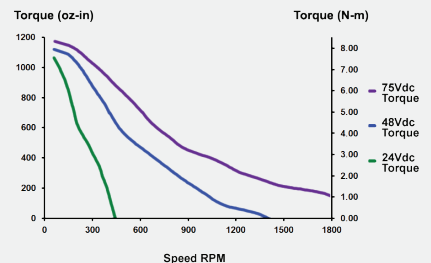
SMD34X-850



SMD24X-350



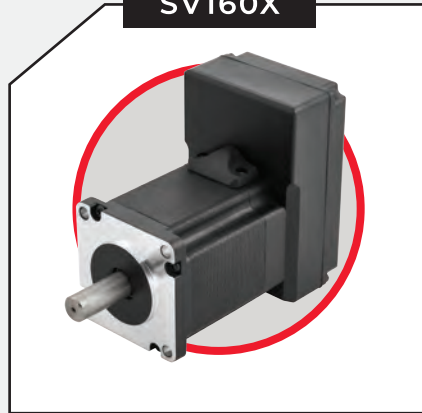
SMD34X-1100



**INTEGRATED
 STEPPER
 MOTORS**

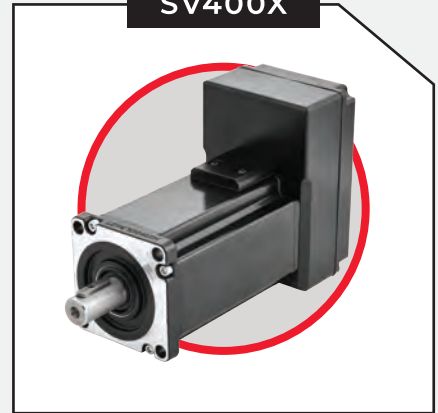
INTEGRATED SERVO MOTORS

SV160X



Input Voltage: 48 to 80 Vdc
Motor Current: 10.5 Amps Peak
Package Size: 60 mm
Torque: 0.5 Nm Continuous
1.3 Nm Peak
Encoder: Absolute

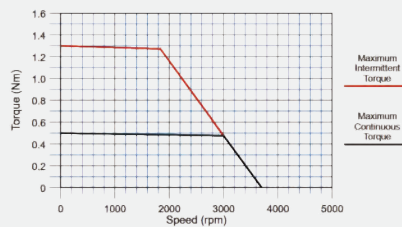
SV400X



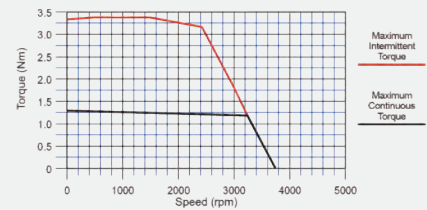
Input Voltage: 48 to 80 Vdc
Motor Current: 25.7 Amps Peak
Package Size: 60 mm
Torque: 1.3 Nm Continuous
3.5 Nm Peak
Encoder: Absolute



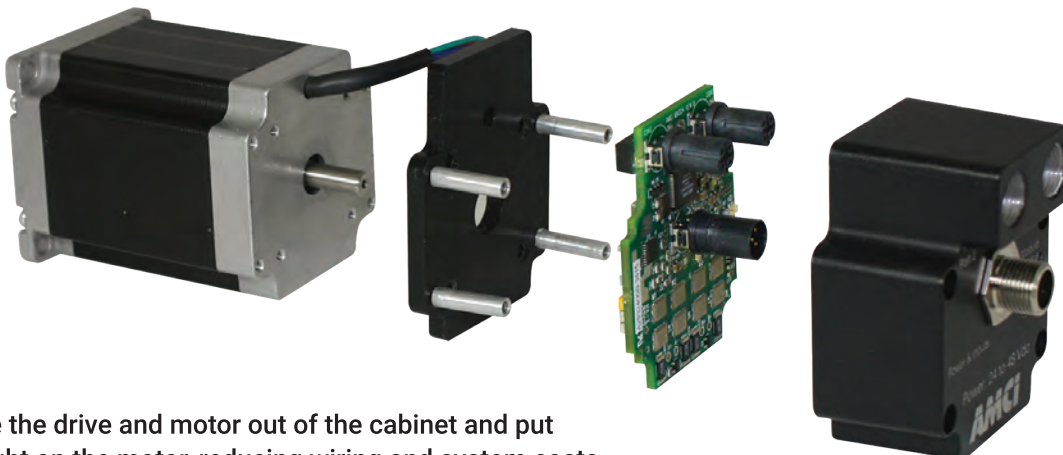
SV160X



SV400X



What's Inside Our Integrated Motors?



We take the drive and motor out of the cabinet and put them right on the motor, reducing wiring and system costs.

DELIVERING A

COMPLETE SOLUTION

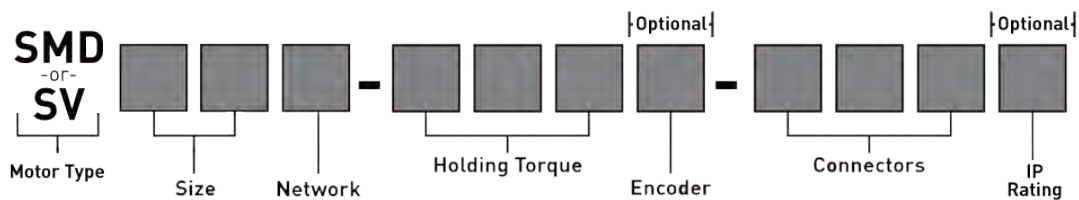


AMCI's selection of gearboxes, connectors, and approved cord sets simplify the ordering process and guarantee 100% compatibility.

Available Accessories:

- Gearboxes
- Cord sets
- Connectors

Ordering Information



STEPPER

MOTOR TYPE	SMD = Integrated Stepper Motor Package	
SIZE	17 = NEMA size 17 23 = NEMA size 23	24 = NEMA size 24 34 = NEMA size 34
NETWORK	E2 = EtherNet/IP, Modbus-TCP, and Profinet w/Embedded Switch K = EtherCat w/Embedded Switch	
HOLDING TORQUE	80 = 80 oz-in torque rating (NEMA 17) 130 = 130 oz-in torque rating (NEMA 23) 240 = 240 oz-in torque rating (NEMA 23) 350 = 350 oz-in torque rating (NEMA 24)	450 = 450 oz-in torque rating (NEMA 34) 850 = 850 oz-in torque rating (NEMA 34) 1100 = 1100 oz-in torque rating (NEMA 34)
ENCODER	E = Incremental encoder A = Absolute multi-turn encoder blank = no encoder	
CONNECTORS	M12 = M12 connectors	
IP RATING	P=IP67 rating (Only available for SMDs) S=IP64 rating (Only available for SMDs) blank = IP50 rating (not available with NEMA 34)	

SERVO

MOTOR TYPE	SV = Integrated Servo Motor Package	
SIZE	160=160 WATT 400=400 WATT	
NETWORK	E2 = EtherNet/IP, Modbus-TCP, and Profinet w/Embedded Switch	



AMCI **ADVANCED
MICRO CONTROLS INC.**

20 GEAR DRIVE, PLYMOUTH INDUSTRIAL PARK, TERRYVILLE C.T. 06786
TEL: (860) 585 - 1254 | FAX: (860) 584-1973 | EMAIL: SALES@AMCI.COM

AMCI.COM